

# CHRIS MYERS

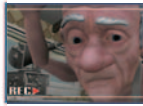
## Character Animator

chris@chrismyers3d.com

www.chrismyers3d.com

912.308.9082

## Reel Breakdown Winter 2008



### "The Historical Truth," Scene 2A

14 Seconds: Maya  
Contribution: All animation, rigging,  
character model, director, character voice



### Wall Climb

3 Seconds: Maya  
Contribution: All animation



### Back Flip

4 Seconds: Maya  
Contribution: All animation



### "The Historical Truth," Scene 4E

6 Seconds: Maya  
Contribution: All animation, rigging,  
character model, director, character voice



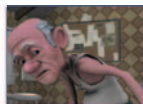
### Ninja Fight

3 Seconds: Maya  
Contribution: All animation



### The Pitch

3 Seconds: Maya  
Contribution: All animation



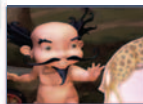
### "The Historical Truth," Scene 2B

5 Seconds: Maya  
Contribution: All animation, rigging,  
character model, director, character voice



### I think I've got it...

6 Seconds: Maya  
Contribution: All animation



### "Solomon Grundy," Monday

6 Seconds: Maya  
Contribution: Co-director and all animation



### "Solomon Grundy," Thursday

4 Seconds: Maya  
Contribution: Co-director and all animation



### Baby Bond

10 Seconds: Maya  
Contribution: All animation

### "Solomon Grundy"

Co-director/animation director

"Solomon Grundy" screened in the 2006 SIGGRAPH Animation Theater and many other film festivals around the world including Japan, the Czech Republic, Italy, England, Poland, Brazil and Hungary.

